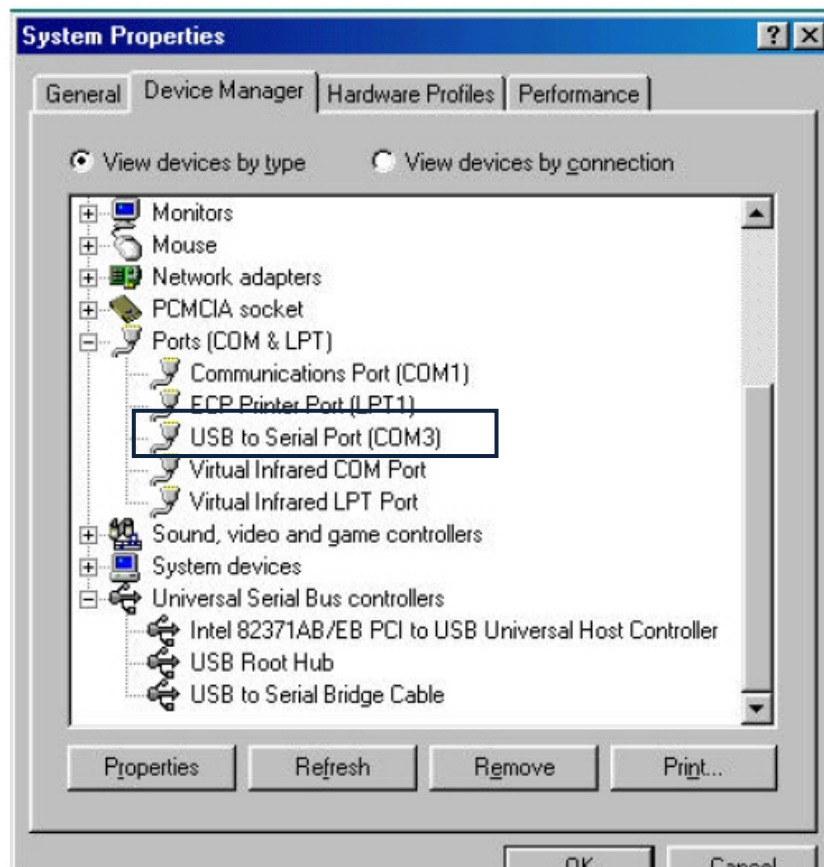


Updating the Firmware

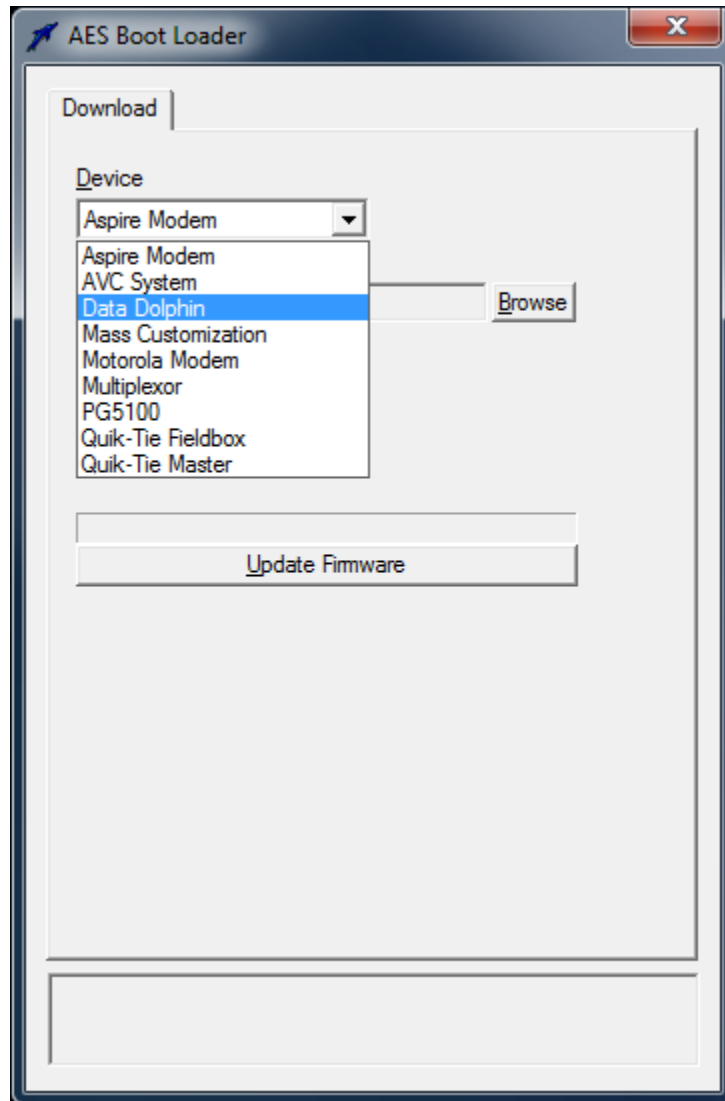
Optiloader

Note the COM port that you have connected to the Data Dolphin logger.



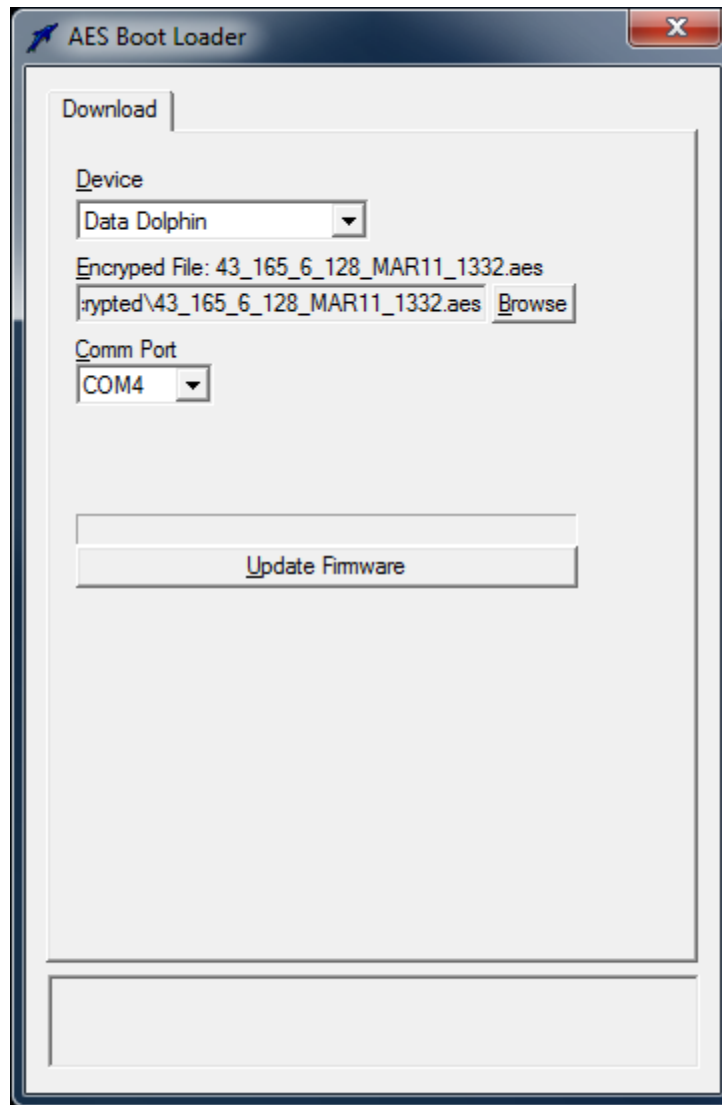
Now that the cable is connected to the unit we can start “OptiLoader.exe” program.

OptiLoader can be found on the website, www.datadolphin.com in the Support and Downloads section. The firmware upgrade file will be provided to you by Optimum Instruments. Start up OptiLoader now by double clicking on the exe from where you have downloaded it to.



Under Device select 'Data Dolphin' to be upgraded.

The bottom portion of the dialog contains a status box where status information is displayed. The box is read only and displays status information with the most current message at the top. Prior messages can be read by clicking in the box and navigating with the arrow keys.




Usage

1. Select the “Data Dolphin” setting for the **Device** to boot load.
2. Select the firmware file that is to be boot loaded into the device by clicking the **Browse** button and clicking **open** once you have located it on your computer.
3. Select the **Comm Port** (from Device Manager – Ports – Com) that is connected to the device. The application will detect all valid com ports on the computer.
4. When you are ready, cycle the power on the data logger and press **Update Firmware**.

5. The internal clock of the data logger will count down 8 seconds. It is during this time that the **Update Firmware** button must be pressed. If the 8 second boot load window passes, the Data Dolphin will start up for normal operation, and the logger will have to be reset to restart the boot load process again.

Successful start of a boot load will be indicated by the progress indicator that appears above the **Update Firmware** button as well as in the status box at the bottom of the application. When the boot load completes (100%) the Data Dolphin will be restarted automatically.

6. Close the OptiLoader program by clicking the  button in the top-right corner.